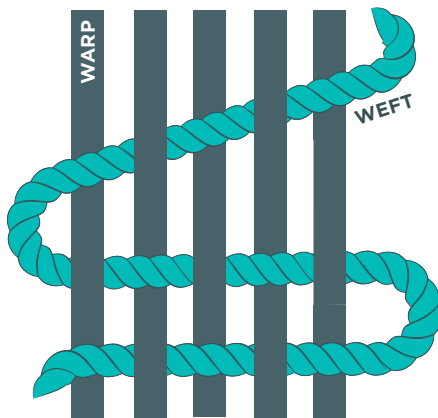


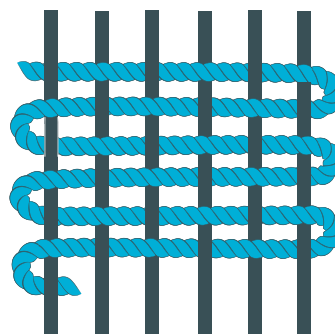
HOW TO WEAVE

Weaving is a pattern where the weft strings are wrapped around, over, or under the warp strings. There are many different patterns, but they are all based on the weaver adding weft strings to the warp.

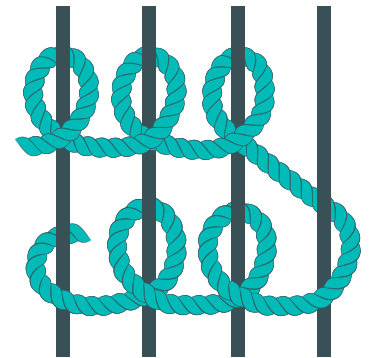
STEP 1:
Set up the warp on the loom.



STEP 2:
Begin weaving.



Tabby

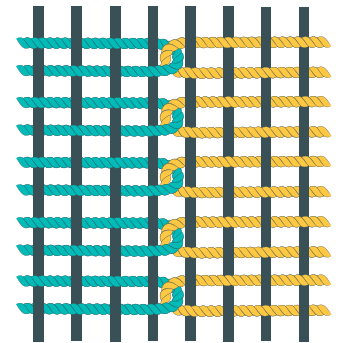


Soumak

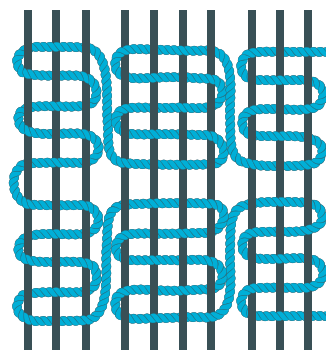
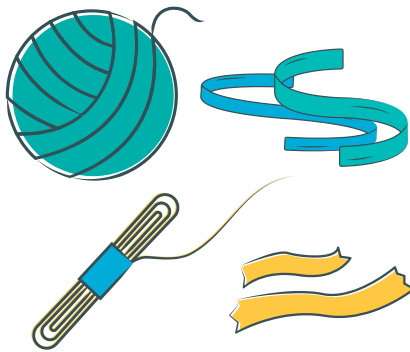
STEP 3:
Add details using a variety of yarn, string, ribbon, and/or strips of cloth.



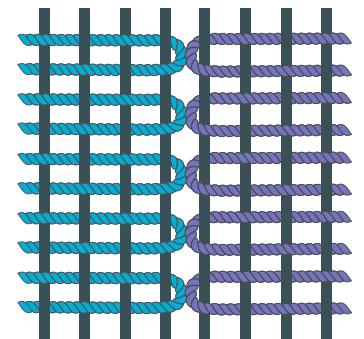
Egyptian Knot



Interlocking



Spanish Lace



Slit