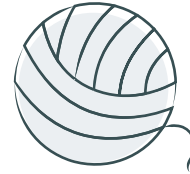
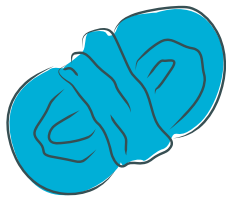


WEAVING VOCABULARY



Beater	A stick, comb, or fork use to tightly pack the weft threads.
Fiber	A long, thin thread of material like wool or cotton.
Loom	A machine or frame used for weaving cloth. A loom holds the warp threads in place.
Motif	A design element or theme in a work of art.
Needle Threader	A simple tool used in the aid of threading a needle.
Pile	Any threads that extend above the surface of the weaving.
Skein	A length of yarn or thread loosely wound.
Selvage	The sides of a weaving that run parallel to the warp threads.
Tabby Weave	The basic alternating weaving pattern (A/B pattern).
Tapestry Needle	A short needle with a long eye and a blunt point.
Yarn	Fibers that have been twisted into long strands. Yarn can be made from wool, cotton, silk, etc.
Warp	The vertical threads held in place on a loom that form the foundation of a fabric.
Weft	The threads that are passes over and under the foundation warp threads.
Wool	The textile fiber obtained from sheep.